

SP MANWEB



Reinforcement to the North Shropshire Electricity Distribution Network

SP Manweb's Responses to S51 Advice and Comments on the
S55 Checklist

Application Reference: EN020021

Plan of Important Hedgerows V2

DCO Document 2.5

SP MANWEB

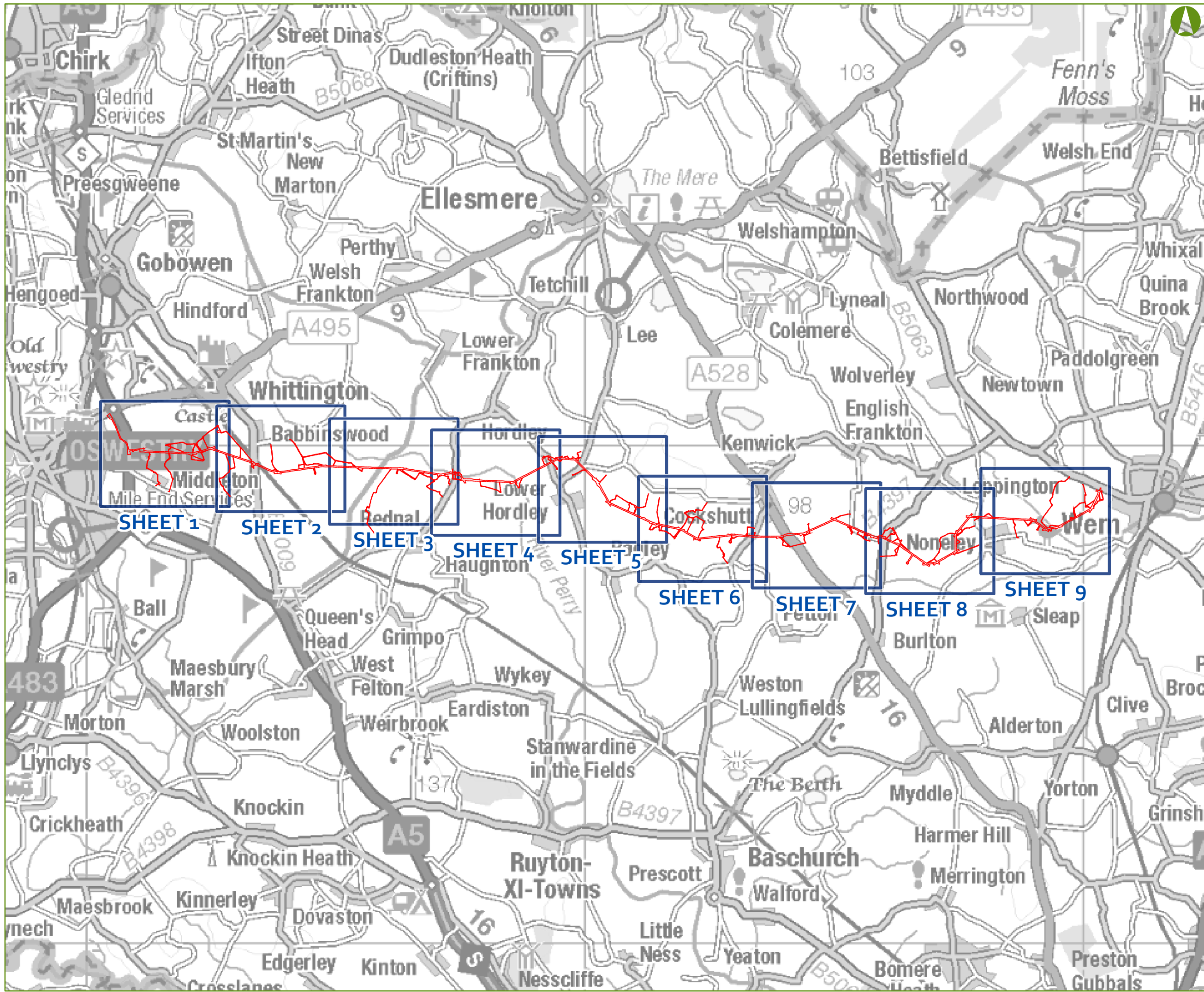
**Reinforcement to the North Shropshire Electricity
Distribution Network**

Plan of Important Hedgerows V2

PINS Reference EN020021

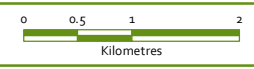
QA Box

Author		SP Manweb	
Planning Inspectorate Application Reference APP-009		EN020021	
Date	Version	Status	Description/Changes
06/03/2019	2	Final	<p>DCO Document 2.5 (APP-009) updated in response to S51 Advice / S55 checklist comments from PINS 10/12/18</p> <p>Key Plan added</p> <p>Submitted to PINS</p>



KEY
 ORDER LIMITS

Notes:
 This drawing is scaled at an A3 paper size, therefore any prints made at a smaller size will affect the accuracy of measurement units and should not be scaled against.



BACKGROUND MAPPING INFORMATION HAS BEEN REPRODUCED FROM THE ORDNANCE SURVEY MAP BY PERMISSION OF ORDNANCE SURVEY ON BEHALF OF THE CONTROLLER OF HER MAJESTY'S STATIONERY OFFICE. CROWN COPYRIGHT AND DATABASE RIGHTS 2018. ORDNANCE SURVEY 0100031673. CONTAINS OS DATA © CROWN COPYRIGHT AND DATABASE RIGHT 2018.



GILLESPIES **SP MANWEB**

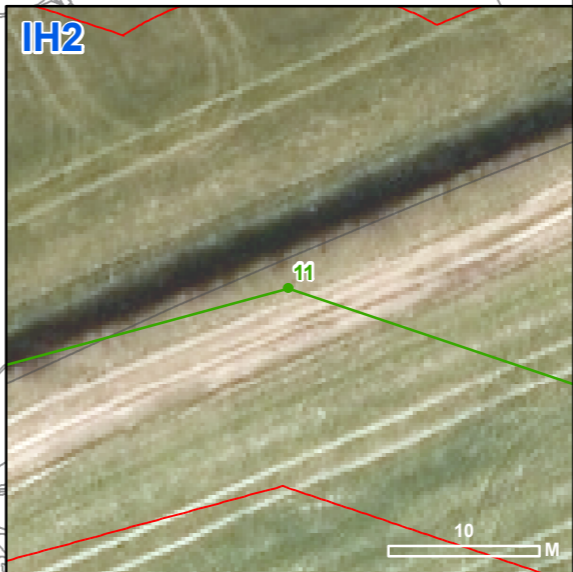
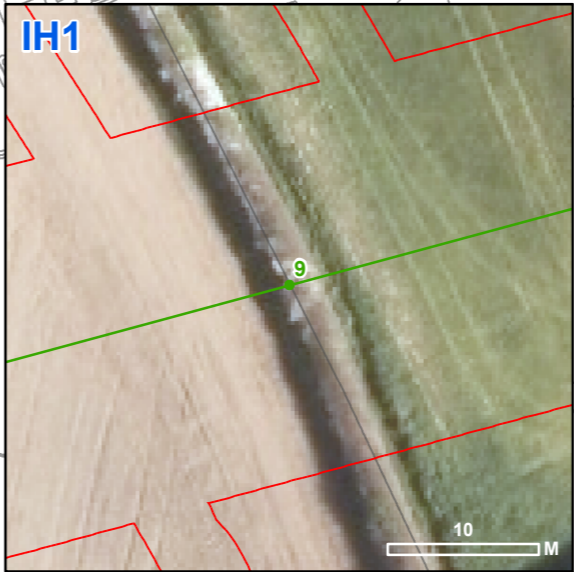
Scheme Name: REINFORCEMENT TO NORTH SHROPSHIRE ELECTRICITY DISTRIBUTION NETWORK

Document: DCO DOCUMENT 2.5

Document Title: PLAN OF IMPORTANT HEDGEROWS AFFECTED SHEET KEY PLAN

Drawn: KC	Checked: ZF	Approved: JC	Date: 18/01/2019	Sheet: 1 OF 1	Rev: 1
-----------	-------------	--------------	------------------	---------------	--------

Document Type: FIGURE	Scale: 1:70,000	Sheet Size: A3 (420 mm x 297 mm)
-----------------------	-----------------	----------------------------------



KEY

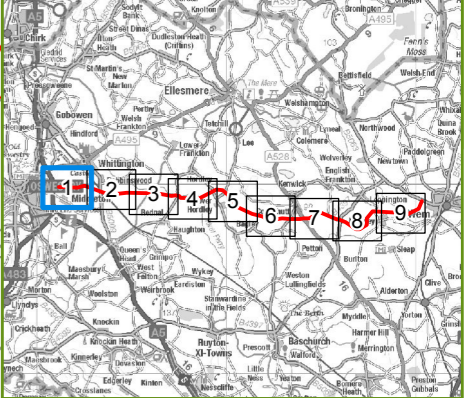
- PROPOSED 132 kV POLE POSITIONS
- FINAL ROUTE ALIGNMENT
- ORDER LIMITS

Notes:

This drawing is scaled at an A3 paper size, therefore any prints made at a smaller size will affect the accuracy of measurement units and should not be scaled against.



BACKGROUND MAPPING INFORMATION HAS BEEN REPRODUCED FROM THE ORDNANCE SURVEY MAP BY PERMISSION OF ORDNANCE SURVEY ON BEHALF OF THE CONTROLLER OF HER MAJESTY'S STATIONERY OFFICE. CROWN COPYRIGHT AND DATABASE RIGHTS 2018. ORDNANCE SURVEY 0100031673. CONTAINS OS DATA © CROWN COPYRIGHT AND DATABASE RIGHT 2018.



GILLESPIES **SP MANWEB**

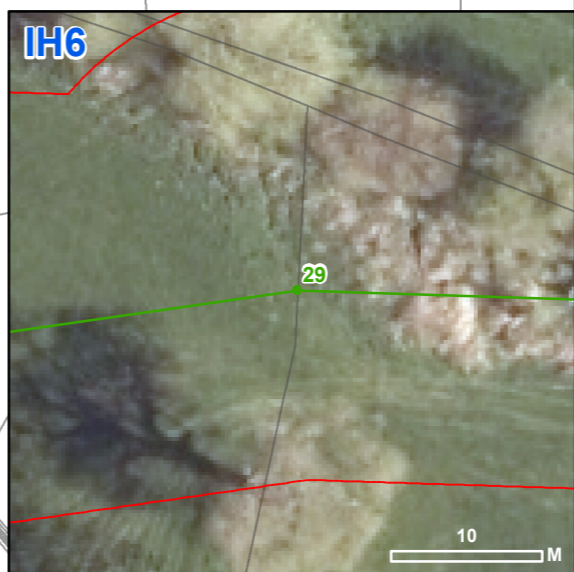
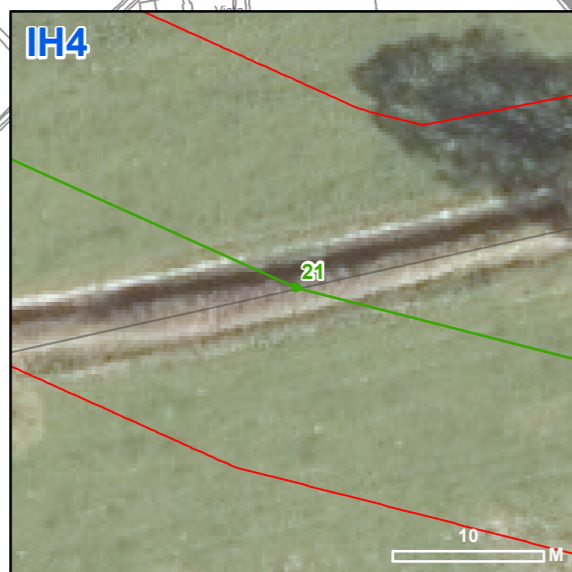
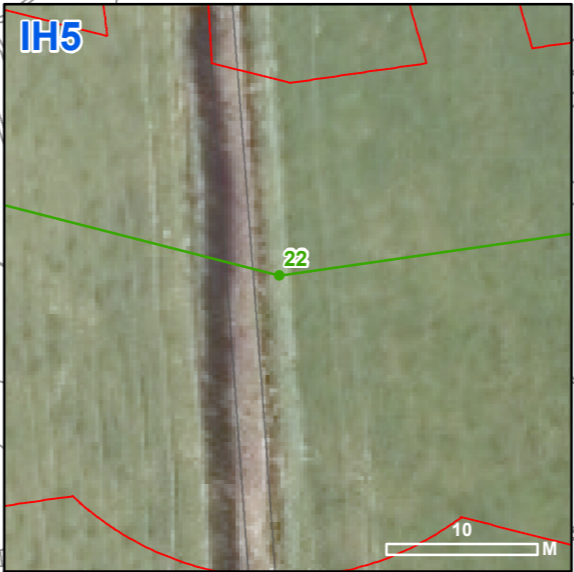
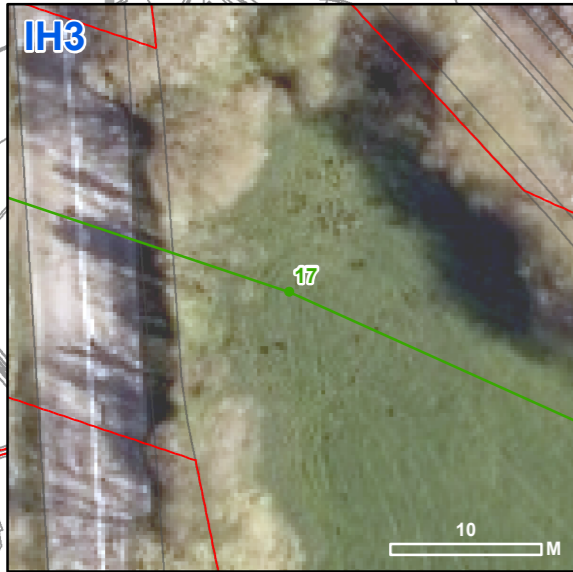
Scheme Name: REINFORCEMENT TO NORTH SHROPSHIRE ELECTRICITY DISTRIBUTION NETWORK

Document: DCO DOCUMENT 2.5

Document Title: PLAN OF IMPORTANT HEDGEROWS AFFECTED 1 OF 9

Drawn: KC	Checked: ZF	Approved: JC	Date: NOV 18	Sheet: 1 OF 9	Rev: 1
-----------	-------------	--------------	--------------	---------------	--------

Document Type: FIGURE	Scale: 1:7,500	Sheet Size: A3 (420 mm x 297 mm)
-----------------------	----------------	----------------------------------

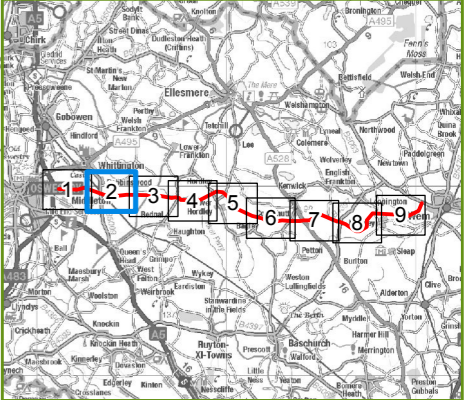


- KEY**
- PROPOSED 132 kV POLE POSITIONS
 - FINAL ROUTE ALIGNMENT
 - ORDER LIMITS

Notes:
 This drawing is scaled at an A3 paper size, therefore any prints made at a smaller size will affect the accuracy of measurement units and should not be scaled against.



BACKGROUND MAPPING INFORMATION HAS BEEN REPRODUCED FROM THE ORDNANCE SURVEY MAP BY PERMISSION OF ORDNANCE SURVEY ON BEHALF OF THE CONTROLLER OF HER MAJESTY'S STATIONARY OFFICE. CROWN COPYRIGHT AND DATABASE RIGHTS 2018. ORDNANCE SURVEY 0100031673. CONTAINS OS DATA © CROWN COPYRIGHT AND DATABASE RIGHT 2018.



GILLESPIES SP MANWEB

Scheme Name: REINFORCEMENT TO NORTH SHROPSHIRE ELECTRICITY DISTRIBUTION NETWORK

Document: DCO DOCUMENT 2.5

Document Title: PLAN OF IMPORTANT HEDGEROWS AFFECTED 2 OF 9

Drawn: KC	Checked: ZF	Approved: JC	Date: NOV 18	Sheet: 2 OF 9	Rev: 1
Document Type: FIGURE	Scale: 1:7,500	Sheet Size: A3 (420 mm x 297 mm)			

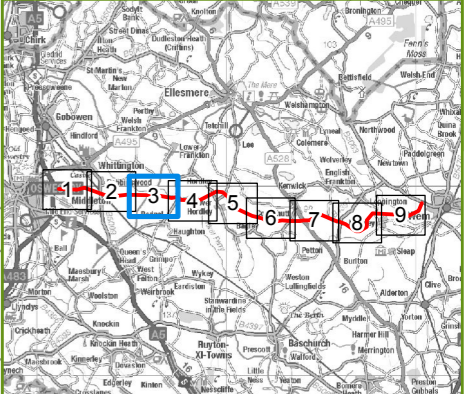


- KEY**
- PROPOSED 132 kV POLE POSITIONS
 - FINAL ROUTE ALIGNMENT
 - ORDER LIMITS

Notes:
This drawing is scaled at an A3 paper size, therefore any prints made at a smaller size will affect the accuracy of measurement units and should not be scaled against.



BACKGROUND MAPPING INFORMATION HAS BEEN REPRODUCED FROM THE ORDNANCE SURVEY MAP BY PERMISSION OF ORDNANCE SURVEY ON BEHALF OF THE CONTROLLER OF HER MAJESTY'S STATIONERY OFFICE. CROWN COPYRIGHT AND DATABASE RIGHTS 2018. ORDNANCE SURVEY 0100031673. CONTAINS OS DATA © CROWN COPYRIGHT AND DATABASE RIGHT 2018.



GILLESPIES **SP MANWEB**

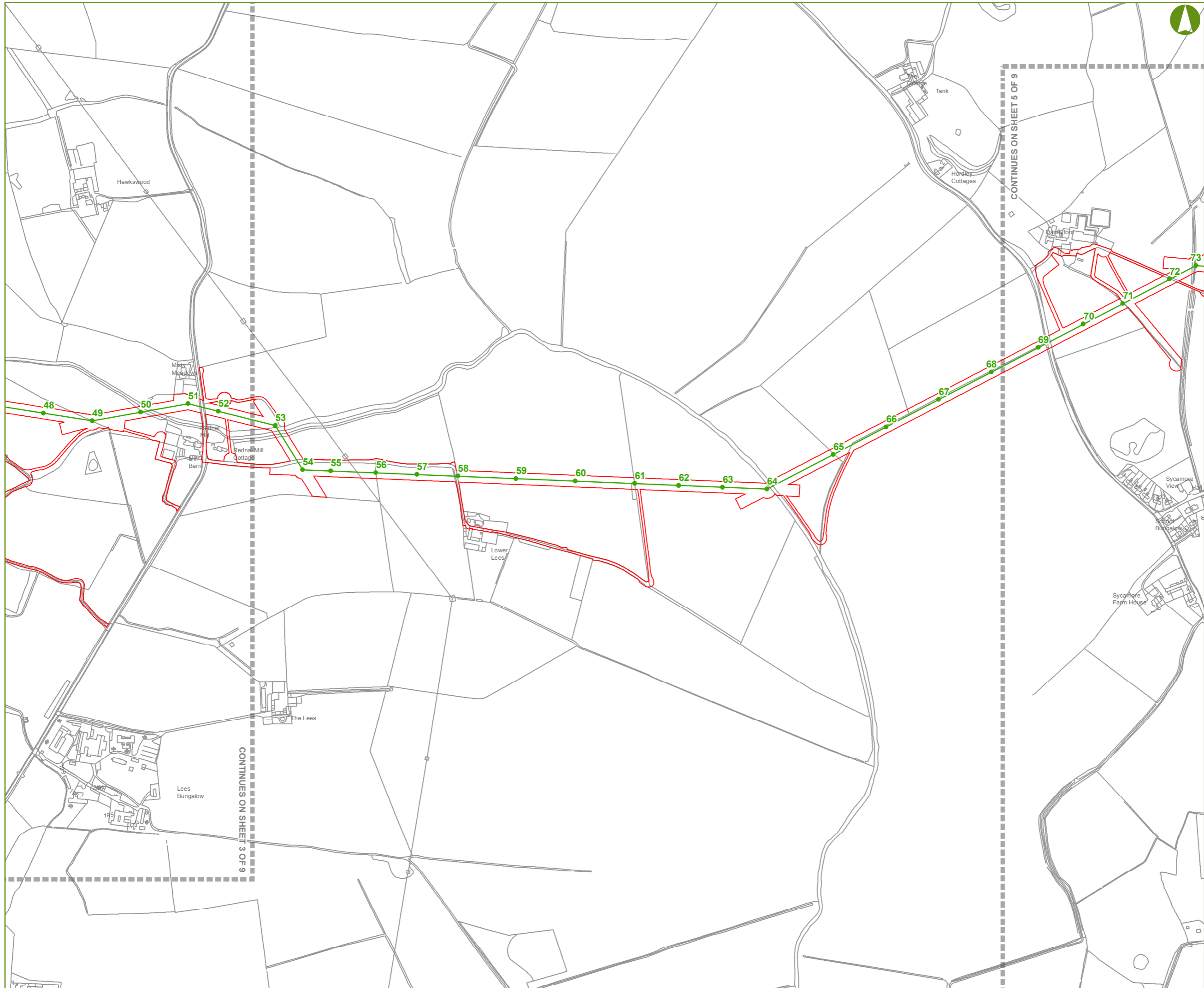
Scheme Name: REINFORCEMENT TO NORTH SHROPSHIRE ELECTRICITY DISTRIBUTION NETWORK

Document: DCO DOCUMENT 2.5

Document Title: PLAN OF IMPORTANT HEDGEROWS AFFECTED 3 OF 9

Drawn: KC	Checked: ZF	Approved: JC	Date: NOV 18	Sheet: 3 OF 9	Rev: 1
-----------	-------------	--------------	--------------	---------------	--------

Document Type: FIGURE	Scale: 1:7,500	Sheet Size: A3 (420 mm x 297 mm)
-----------------------	----------------	----------------------------------

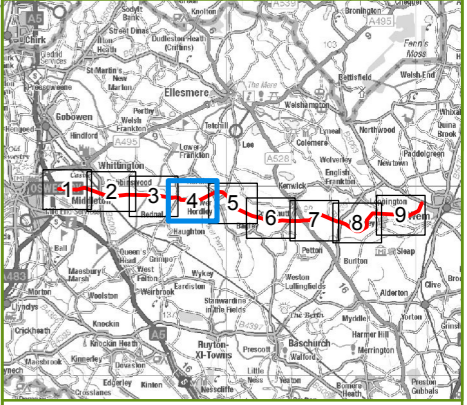


- KEY**
- PROPOSED 132 kV POLE POSITIONS
 - FINAL ROUTE ALIGNMENT
 - ORDER LIMITS

Notes:
This drawing is scaled at an A3 paper size, therefore any prints made at a smaller size will affect the accuracy of measurement units and should not be scaled against.



BACKGROUND MAPPING INFORMATION HAS BEEN REPRODUCED FROM THE ORDNANCE SURVEY MAP BY PERMISSION OF ORDNANCE SURVEY ON BEHALF OF THE CONTROLLER OF HER MAJESTY'S STATIONERY OFFICE. CROWN COPYRIGHT AND DATABASE RIGHTS 2018. ORDNANCE SURVEY 0100031673. CONTAINS OS DATA © CROWN COPYRIGHT AND DATABASE RIGHT 2018.



GILLESPIES **SP MANWEB**

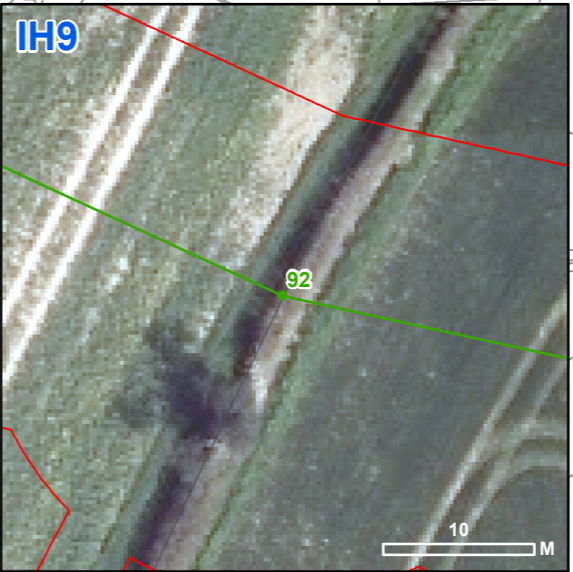
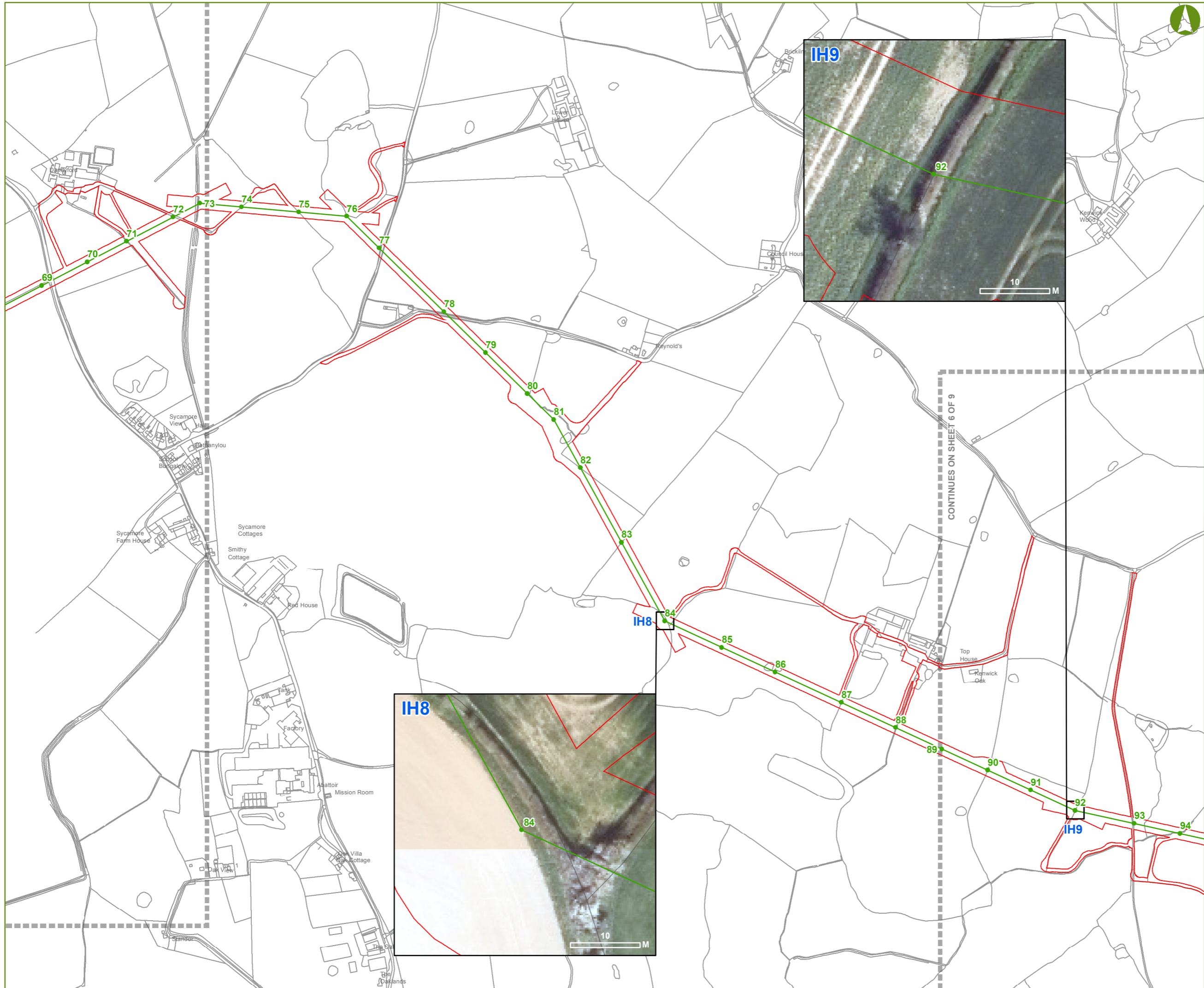
Scheme Name: REINFORCEMENT TO NORTH SHROPSHIRE ELECTRICITY DISTRIBUTION NETWORK

Document: DCO DOCUMENT 2.5

Document Title: PLAN OF IMPORTANT HEDGEROWS AFFECTED 4 OF 9

Drawn: KC	Checked: ZF	Approved: JC	Date: NOV 18	Sheet: 4 OF 9	Rev: 1
-----------	-------------	--------------	--------------	---------------	--------

Document Type: FIGURE	Scale: 1:7,500	Sheet Size: A3 (420 mm x 297 mm)
-----------------------	----------------	----------------------------------



KEY

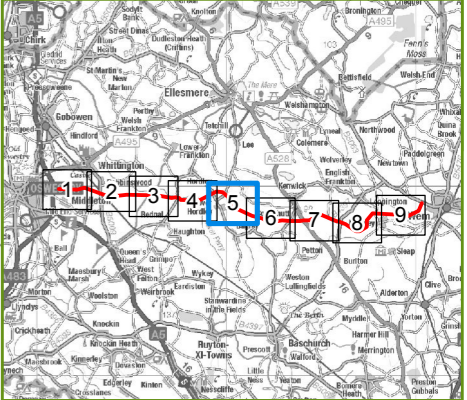
- PROPOSED 132 kV POLE POSITIONS
- FINAL ROUTE ALIGNMENT
- ORDER LIMITS

Notes:

This drawing is scaled at an A3 paper size, therefore any prints made at a smaller size will affect the accuracy of measurement units and should not be scaled against.



BACKGROUND MAPPING INFORMATION HAS BEEN REPRODUCED FROM THE ORDNANCE SURVEY MAP BY PERMISSION OF ORDNANCE SURVEY ON BEHALF OF THE CONTROLLER OF HER MAJESTY'S STATIONERY OFFICE. CROWN COPYRIGHT AND DATABASE RIGHTS 2018. ORDNANCE SURVEY 0100031673. CONTAINS OS DATA © CROWN COPYRIGHT AND DATABASE RIGHT 2018.



GILLESPIES **SP MANWEB**

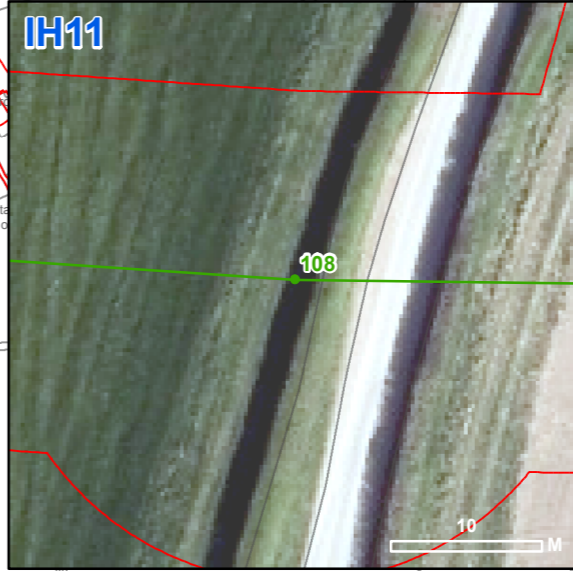
Scheme Name: REINFORCEMENT TO NORTH SHROPSHIRE ELECTRICITY DISTRIBUTION NETWORK

Document: DCO DOCUMENT 2.5

Document Title: **PLAN OF IMPORTANT HEDGEROWS AFFECTED**
5 OF 9

Drawn: KC	Checked: ZF	Approved: JC	Date: NOV 18	Sheet: 5 OF 9	Rev: 1
-----------	-------------	--------------	--------------	---------------	--------

Document Type: FIGURE	Scale: 1:7,500	Sheet Size: A3 (420 mm x 297 mm)
-----------------------	----------------	----------------------------------



KEY

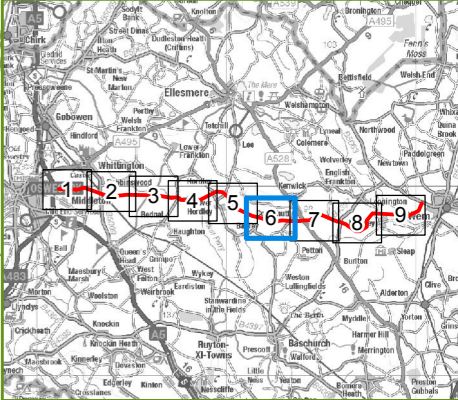
- PROPOSED 132 kV POLE POSITIONS
- FINAL ROUTE ALIGNMENT
- ORDER LIMITS

Notes:

This drawing is scaled at an A3 paper size, therefore any prints made at a smaller size will affect the accuracy of measurement units and should not be scaled against.



BACKGROUND MAPPING INFORMATION HAS BEEN REPRODUCED FROM THE ORDNANCE SURVEY MAP BY PERMISSION OF ORDNANCE SURVEY ON BEHALF OF THE CONTROLLER OF HER MAJESTY'S STATIONERY OFFICE. CROWN COPYRIGHT AND DATABASE RIGHTS 2018. ORDNANCE SURVEY 0100031673. CONTAINS OS DATA © CROWN COPYRIGHT AND DATABASE RIGHT 2018.



GILLESPIES **SP MANWEB**

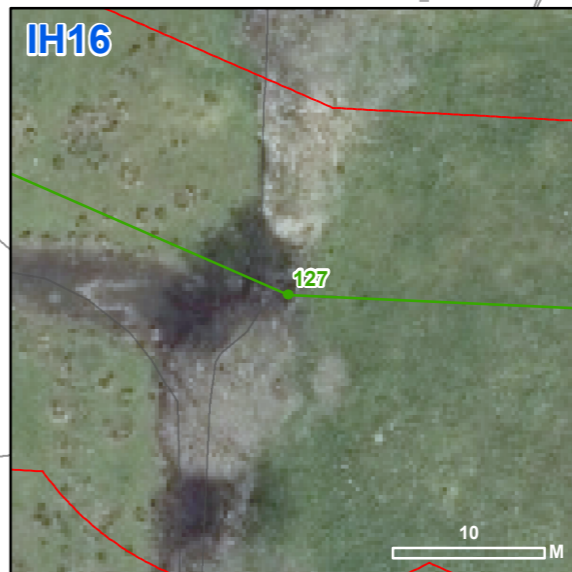
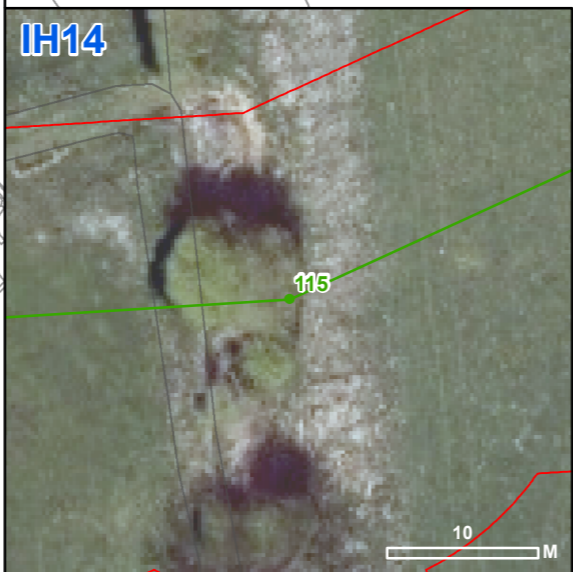
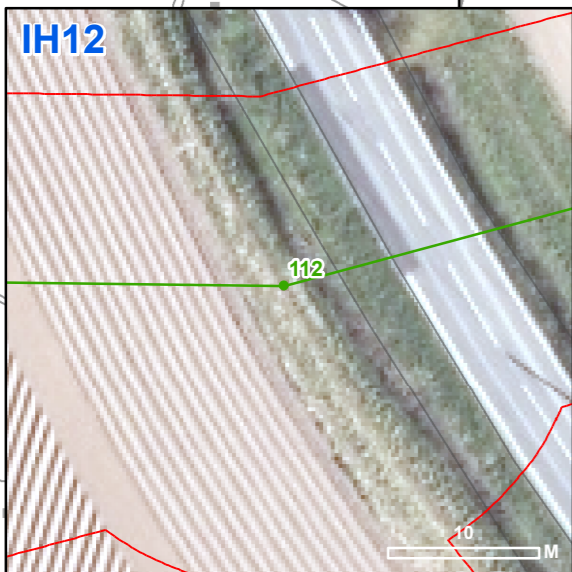
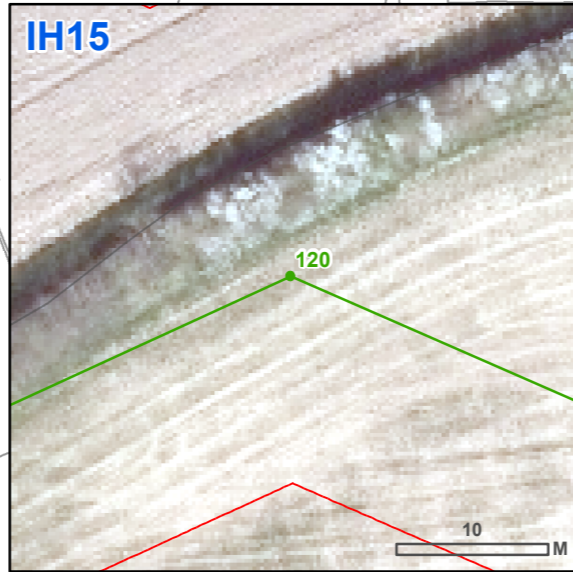
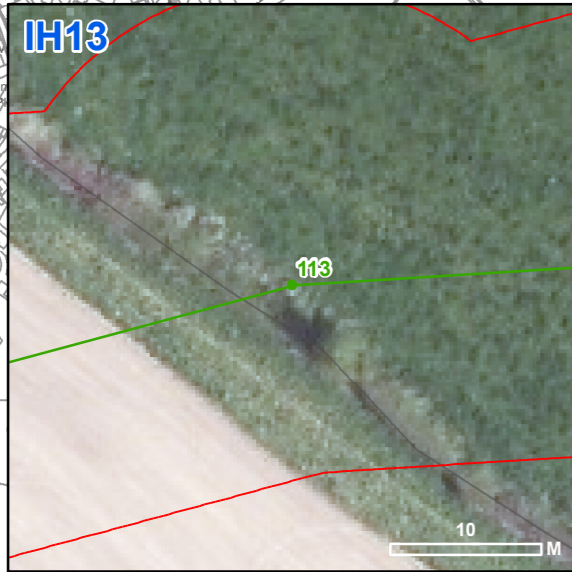
Scheme Name: REINFORCEMENT TO NORTH SHROPSHIRE ELECTRICITY DISTRIBUTION NETWORK

Document: DCO DOCUMENT 2.5

Document Title: PLAN OF IMPORTANT HEDGEROWS AFFECTED 6 OF 9

Drawn: KC	Checked: ZF	Approved: JC	Date: NOV 18	Sheet: 6 OF 9	Rev: 1
-----------	-------------	--------------	--------------	---------------	--------

Document Type: FIGURE	Scale: 1:7,500	Sheet Size: A3 (420 mm x 297 mm)
-----------------------	----------------	----------------------------------

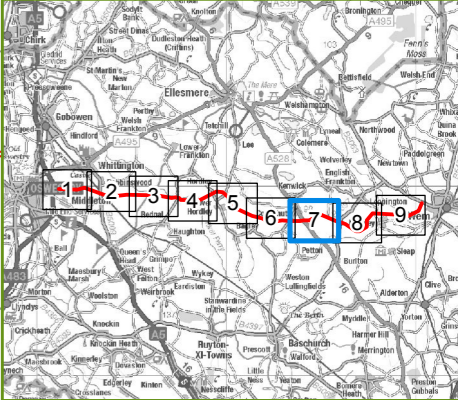


- KEY**
- PROPOSED 132 kV POLE POSITIONS
 - FINAL ROUTE ALIGNMENT
 - ORDER LIMITS

Notes:
This drawing is scaled at an A3 paper size, therefore any prints made at a smaller size will affect the accuracy of measurement units and should not be scaled against.



BACKGROUND MAPPING INFORMATION HAS BEEN REPRODUCED FROM THE ORDNANCE SURVEY MAP BY PERMISSION OF ORDNANCE SURVEY ON BEHALF OF THE CONTROLLER OF HER MAJESTY'S STATIONERY OFFICE. CROWN COPYRIGHT AND DATABASE RIGHTS 2018. ORDNANCE SURVEY 0100031673. CONTAINS OS DATA © CROWN COPYRIGHT AND DATABASE RIGHT 2018.



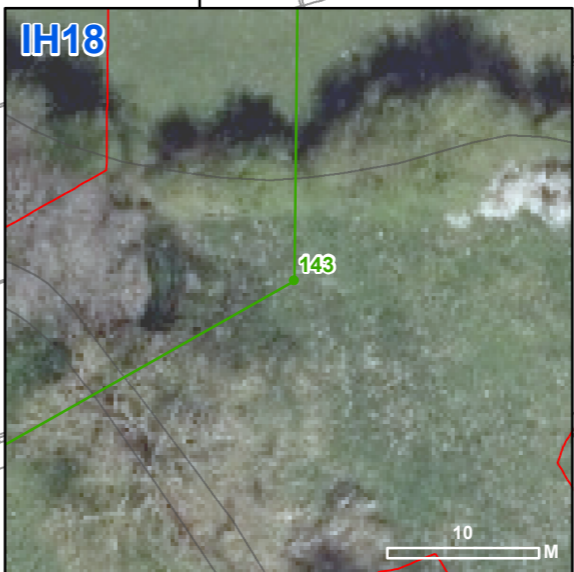
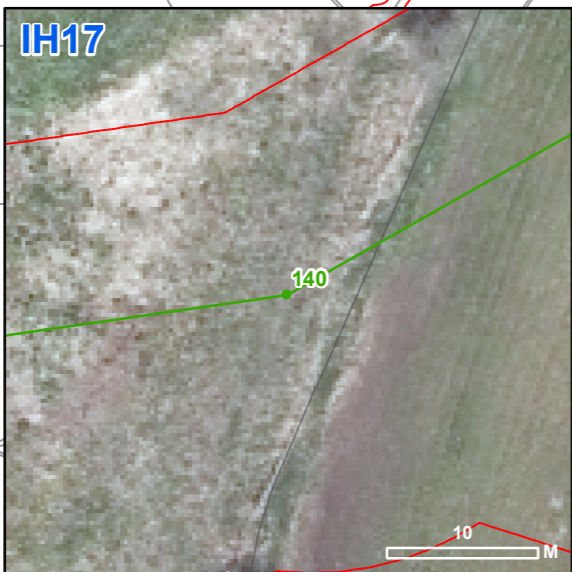
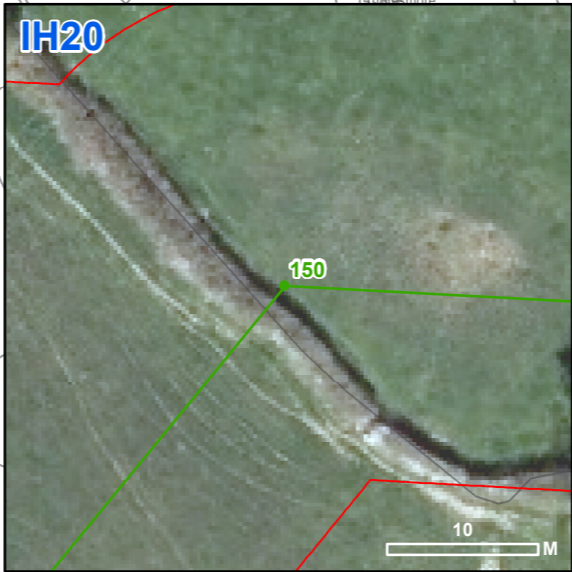
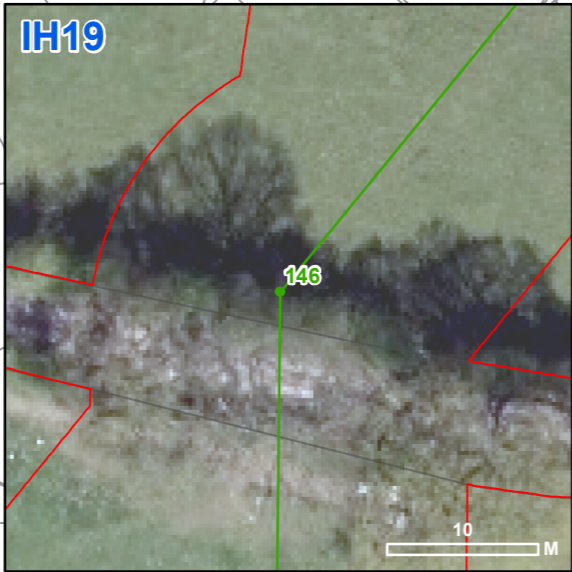
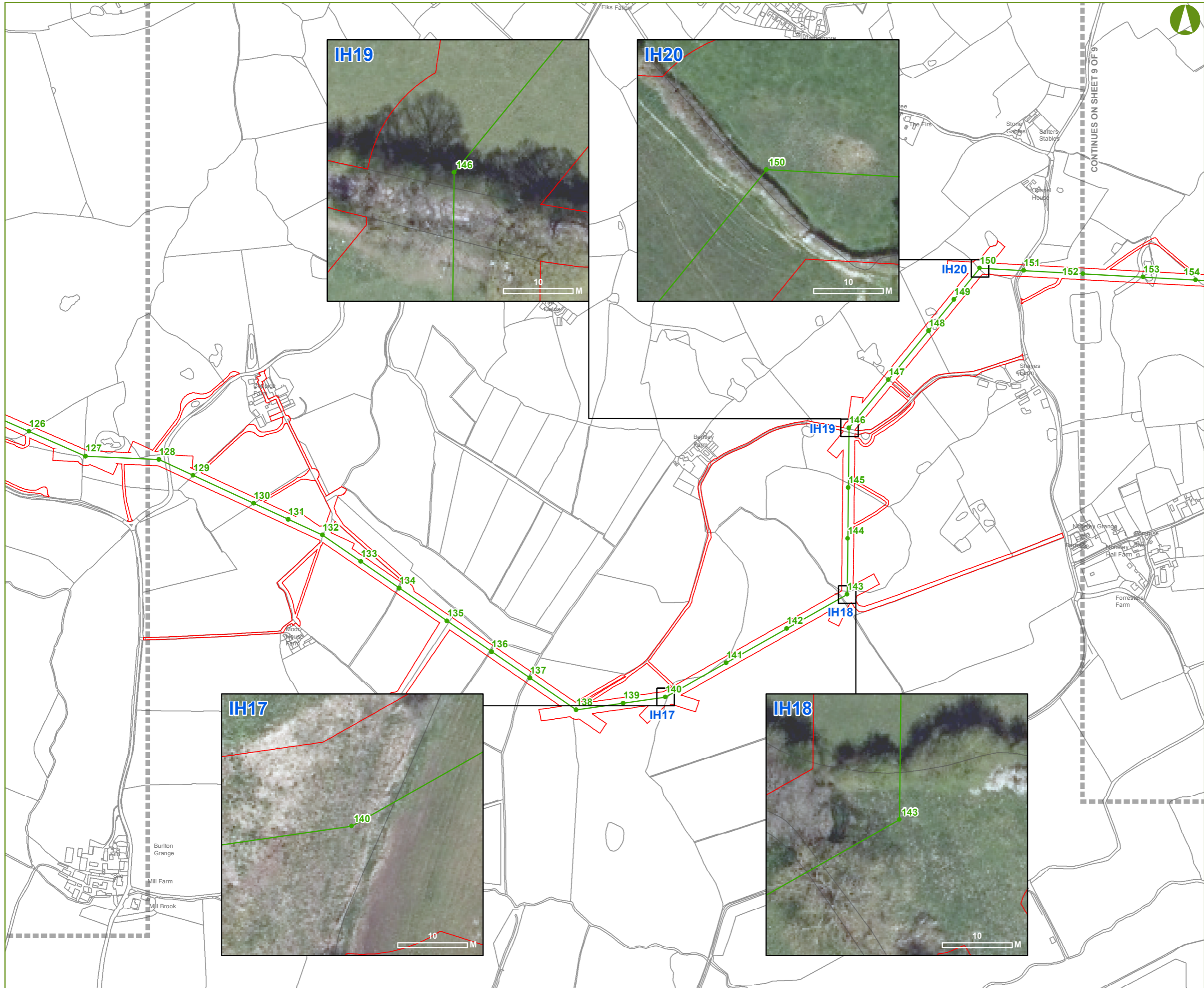
GILLESPIES SP MANWEB

Scheme Name: REINFORCEMENT TO NORTH SHROPSHIRE ELECTRICITY DISTRIBUTION NETWORK

Document: DCO DOCUMENT 2.5

Document Title: PLAN OF IMPORTANT HEDGEROWS AFFECTED 7 OF 9

Drawn: KC	Checked: ZF	Approved: JC	Date: NOV 18	Sheet: 7 OF 9	Rev: 1
Document Type: FIGURE	Scale: 1:7,500	Sheet Size: A3 (420 mm x 297 mm)			

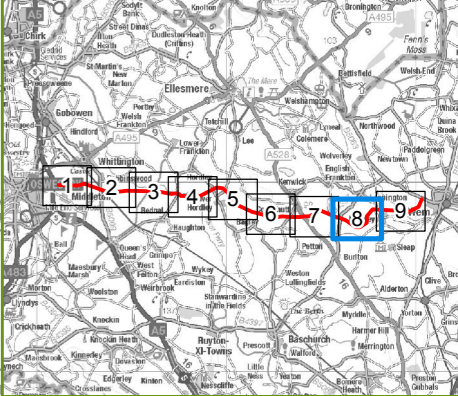


- KEY**
- PROPOSED 132 kV POLE POSITIONS
 - FINAL ROUTE ALIGNMENT
 - ORDER LIMITS

Notes:
This drawing is scaled at an A3 paper size, therefore any prints made at a smaller size will affect the accuracy of measurement units and should not be scaled against.



BACKGROUND MAPPING INFORMATION HAS BEEN REPRODUCED FROM THE ORDNANCE SURVEY MAP BY PERMISSION OF ORDNANCE SURVEY ON BEHALF OF THE CONTROLLER OF HER MAJESTY'S STATIONERY OFFICE. CROWN COPYRIGHT AND DATABASE RIGHTS 2018. ORDNANCE SURVEY 0100031673. CONTAINS OS DATA © CROWN COPYRIGHT AND DATABASE RIGHT 2018.



GILLESPIES **SP MANWEB**

Scheme Name: REINFORCEMENT TO NORTH SHROPSHIRE ELECTRICITY DISTRIBUTION NETWORK

Document: DCO DOCUMENT 2.5

Document Title: PLAN OF IMPORTANT HEDGEROWS AFFECTED 8 OF 9

Drawn: KC	Checked: ZF	Approved: JC	Date: NOV 18	Sheet: 8 OF 9	Rev: 1
Document Type: FIGURE	Scale: 1:7,500	Sheet Size: A3 (420 mm x 297 mm)			

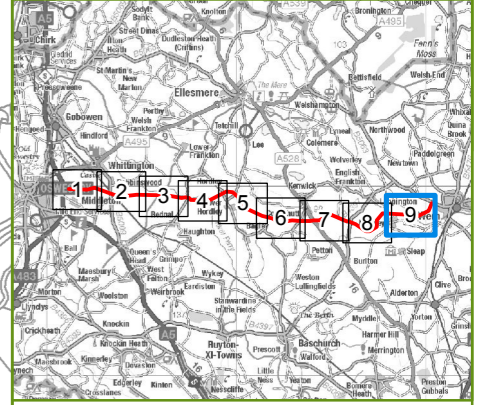


- KEY**
- PROPOSED 132 kV POLE POSITIONS
 - FINAL ROUTE ALIGNMENT
 - ORDER LIMITS

Notes:
This drawing is scaled at an A3 paper size, therefore any prints made at a smaller size will affect the accuracy of measurement units and should not be scaled against.



BACKGROUND MAPPING INFORMATION HAS BEEN REPRODUCED FROM THE ORDNANCE SURVEY MAP BY PERMISSION OF ORDNANCE SURVEY ON BEHALF OF THE CONTROLLER OF HER MAJESTY'S STATIONERY OFFICE. CROWN COPYRIGHT AND DATABASE RIGHTS 2018. ORDNANCE SURVEY 0100031673. CONTAINS OS DATA © CROWN COPYRIGHT AND DATABASE RIGHT 2018.



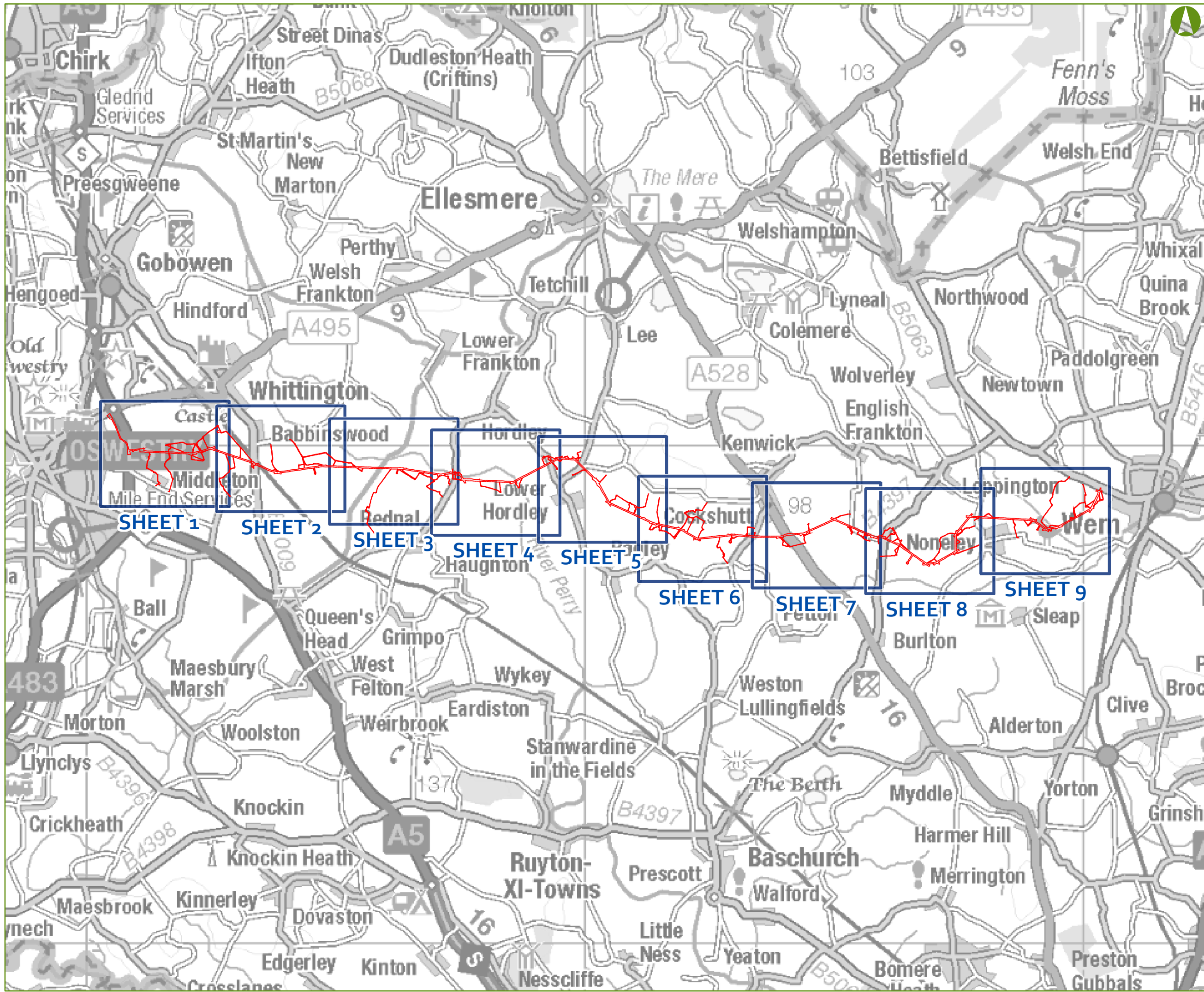
GILLESPIES SP MANWEB

Scheme Name: REINFORCEMENT TO NORTH SHROPSHIRE ELECTRICITY DISTRIBUTION NETWORK

Document: DCO DOCUMENT 2.5

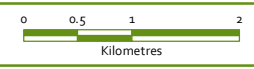
Document Title: PLAN OF IMPORTANT HEDGEROWS AFFECTED 9 OF 9

Drawn: KC	Checked: ZF	Approved: JC	Date: NOV 18	Sheet: 9 OF 9	Rev: 1
Document Type: FIGURE		Scale: 1:7,500	Sheet Size: A3 (420 mm x 297 mm)		



KEY
 ORDER LIMITS

Notes:
 This drawing is scaled at an A3 paper size, therefore any prints made at a smaller size will affect the accuracy of measurement units and should not be scaled against.



BACKGROUND MAPPING INFORMATION HAS BEEN REPRODUCED FROM THE ORDNANCE SURVEY MAP BY PERMISSION OF ORDNANCE SURVEY ON BEHALF OF THE CONTROLLER OF HER MAJESTY'S STATIONERY OFFICE. CROWN COPYRIGHT AND DATABASE RIGHTS 2018. ORDNANCE SURVEY 0100031673. CONTAINS OS DATA © CROWN COPYRIGHT AND DATABASE RIGHT 2018.



GILLESPIES **SP MANWEB**

Scheme Name: REINFORCEMENT TO NORTH SHROPSHIRE ELECTRICITY DISTRIBUTION NETWORK

Document: DCO DOCUMENT 2.5

Document Title: PLAN OF IMPORTANT HEDGEROWS AFFECTED SHEET KEY PLAN

Drawn: KC	Checked: ZF	Approved: JC	Date: 18/01/2019	Sheet: 1 OF 1	Rev: 1
-----------	-------------	--------------	------------------	---------------	--------

Document Type: FIGURE	Scale: 1:70,000	Sheet Size: A3 (420 mm x 297 mm)
-----------------------	-----------------	----------------------------------